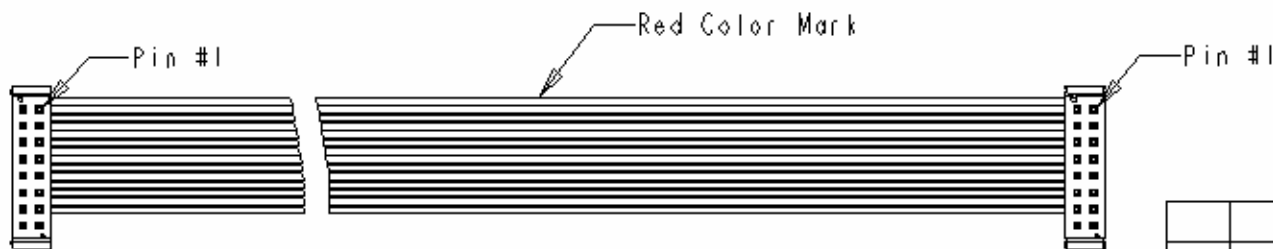
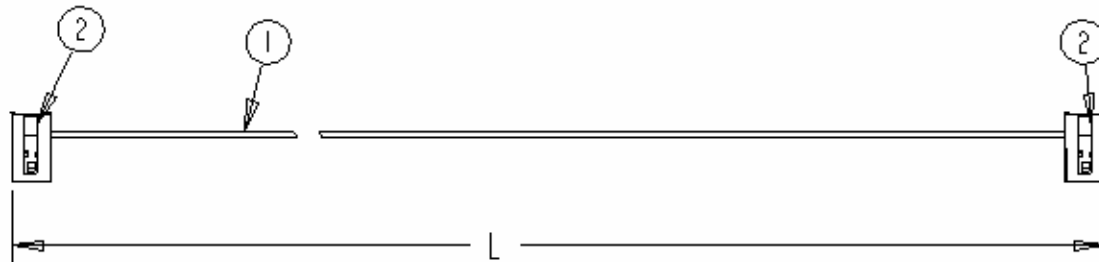
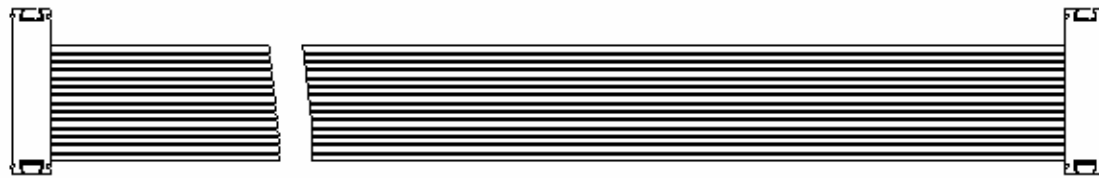


Note:

The Pin #15 & #16 of both connectors should be open when assembly.



18	18 in.	NTC-01-0015-18
12	12 in.	NTC-01-0015-12
L	Length	Part No.


 Unless otherwise noted,
 All linear tolerances
 are $\pm .025$


 3rd Angle Projection

Northgate Technology Center
 2365 Clearbrook Drive
 Arlington Heights, IL 60005
 PH: (847) 364-4224 FX: (847) 364-4815
 Email: NTC.ELL@northgate.com

Rev	Date	Description	Rev	Assd
Rel.	04/23/03	Create new NTC P/N.	SX	
Cable Assembly				
DRN	SX	Date 04/23/03	P/N: NTC-01-0015-L	
CR'D	GC	Date	Project	Title/rev NTC-DI-0015
APP'D	GC	Date	DRN No	SHT OF