

Screen Layout Tool

User Manual

Date of Issue: 4/2/2014
Revision:

Published by

Noritake Co., Inc. Electronics Division

<http://www.noritake-elec.com>

This document is subject to change without prior notice.

© 2014 Noritake Co., Inc. All rights reserved

Screen Layout Tool User Manual
E-M-0162-00

If this overview is distributed with software that includes an end user agreement, this guide, as well as the software described in it, is furnished under license and may be used or copied only in accordance with the terms of such license. Except as permitted by any such license, no part of this guide may be reproduced, stored in a retrieval system, or transmitted, in any form or by any means, electronic, mechanical, recording, or otherwise, without the prior written permission of Noritake Co., Inc. Please note that the content in this manual is protected under copyright law even if it is not distributed with software that includes an end user license agreement.

The content of this overview is furnished for informational use only, is subject to change without notice, and should not be construed as a commitment by Noritake Co., Inc. Noritake Co., Inc. assumes no responsibility or liability for any errors or inaccuracies that may appear in the informational content contained in this manual.

Any references to company names in sample codes are for demonstration purposes only and are not intended to refer to any actual organization.

Noritake and Itron are either registered trademarks or trademarks of Noritake Co., Inc. in the United States and/or other countries.

Noritake Co., Inc., 2635 Clearbrook Drive, Arlington Heights, IL 60005, USA.

Contents

General Description 3

 Introduction 3

 System Requirements 3

Installation 3

Configuration 3

Screen Layout Tool.exe Operations 5

General Description

Introduction

Screen Layout Tool is Windows GUI application for Noritake VFD GU-3000B series model 384x32 and 512x32. This GUI application can write message on the Noritake VFD displays. The software is also able to subdivide up to 4 different windows on the Noritake VFD displays and a user can write message in different windows. Screen Layout Tool can also load black & white image, scroll text message, and provide various fonts including international fonts. Screen Layout Tool supports basic VFD operations for VFD users.

System Requirements

- CPU: Dual Core CPU 2.4 GHz
- RAM: 2GB or above
- OS: Windows 7
- .NET Framework 4.5 Above
- User define window to update only the areas you need.
- CMOS UART, USART, SPI interface.
- 5 V power supply

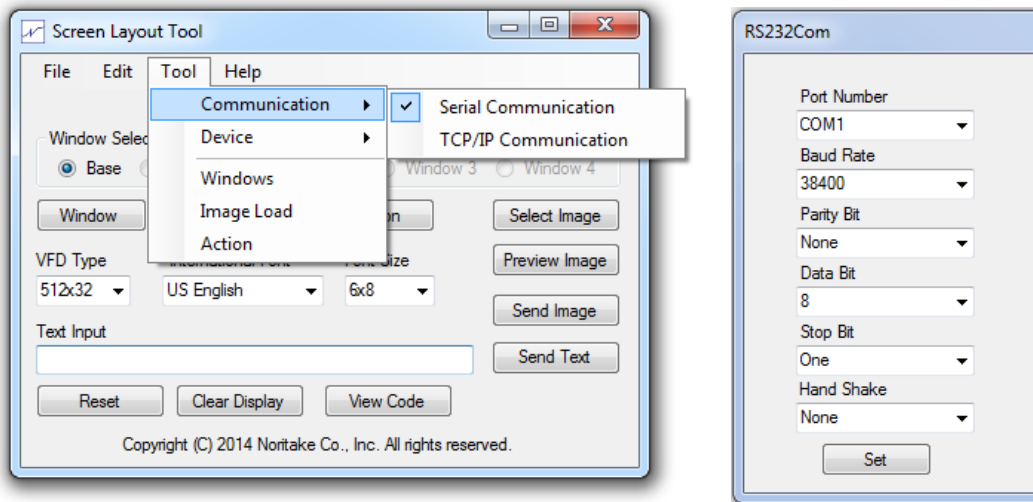
Installation

Installation guide, refer to the document E-M-0161 *Screen Layout Tool Installment Readme.pdf*.

Configuration

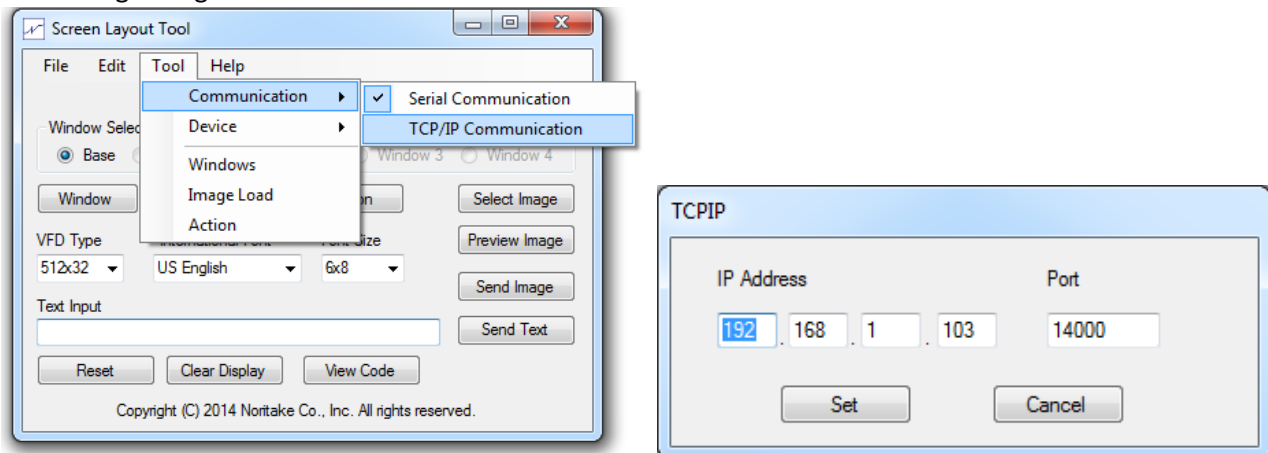
1. A user must configure and setup the RS-232 connection or Internet connection, if available, in order to communicate with the VFD and send it message.

For serial connection, go to Tool → Communication → Serial Communication to open RS-232 Setting dialog.



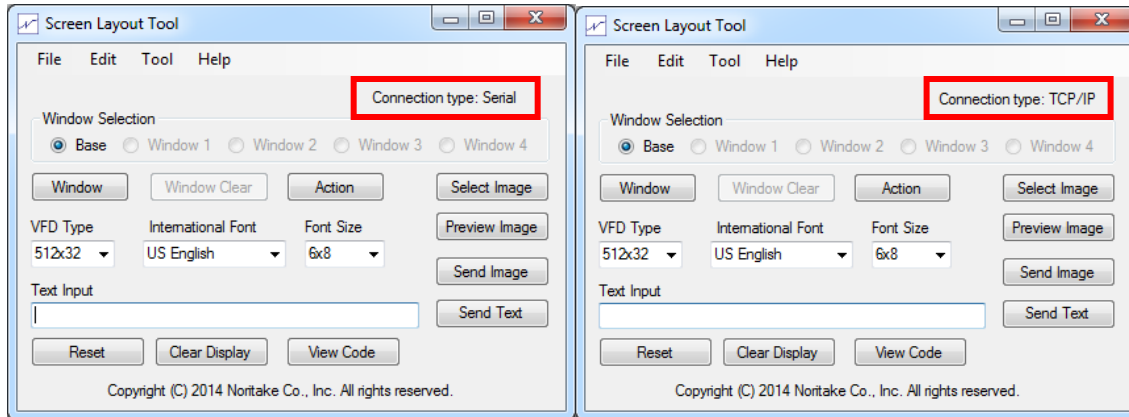
Note: Please set proper values for each parameter setting. A user should change only the Port number because all other settings must be as shown here. Must push Set button to complete the communication setting.

For internet connection, if module is available, go to Tool->Communication -> TCP/IP Communication to open the setting dialog.

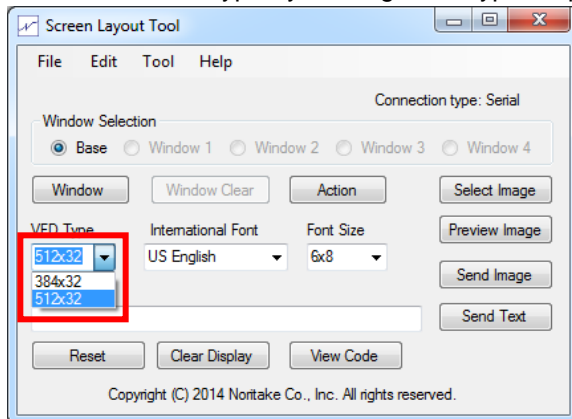


Note: Please set proper values for IP Address and Port. Must Click Set button to complete the communication setting.

After clicking the set button, the connection status will be shown on the main menu.

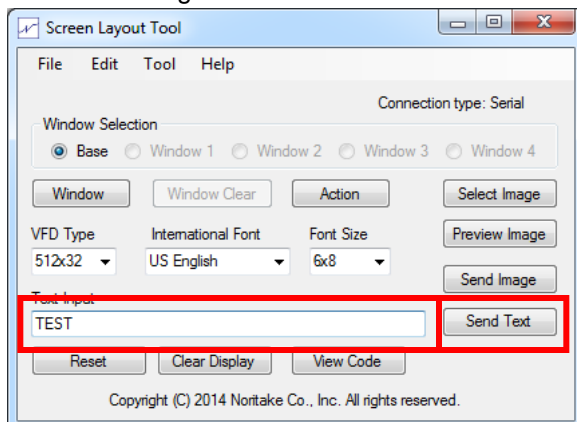


- Next, select VFD type by clicking VFD Type drop down combo box.

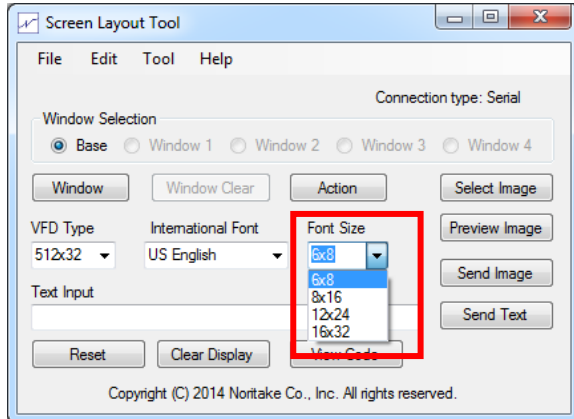


Screen Layout Tool Operations

- Send a Message: Set text in the text box and click *Send Text* button.

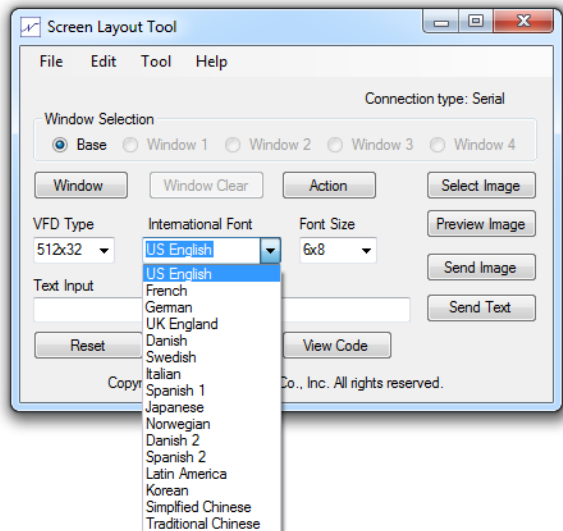


- Font Size: a user can change font size from 6x8 to 16x32 by clicking Font Size combo box.

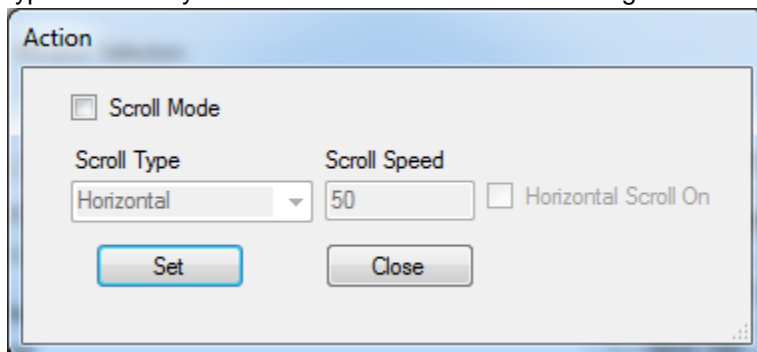


Note: Japanese font has only font size 8x16 and 16x32. Korean and Chinese font has only font size 8x16.

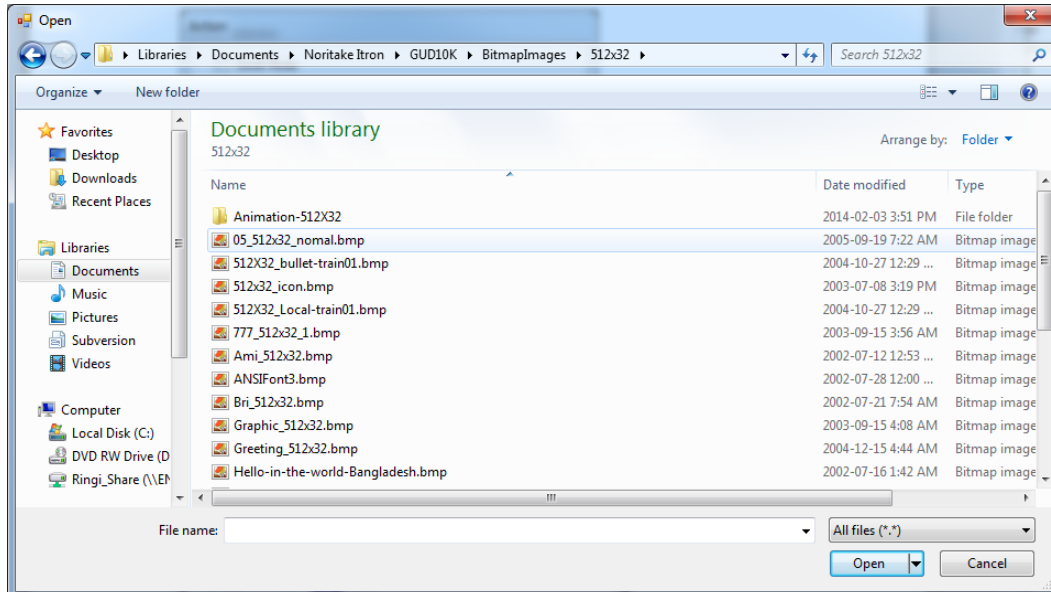
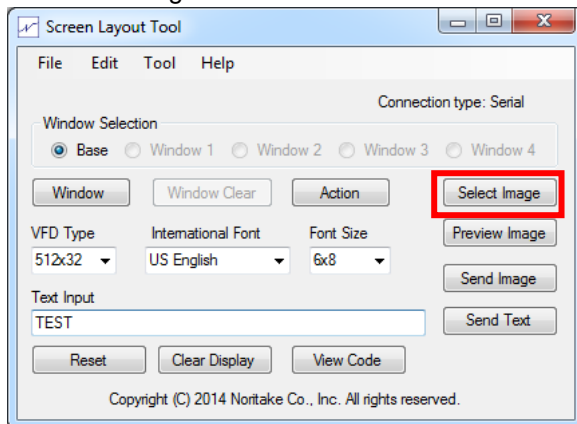
- International Font: a user can change international font by click International Font combo box.



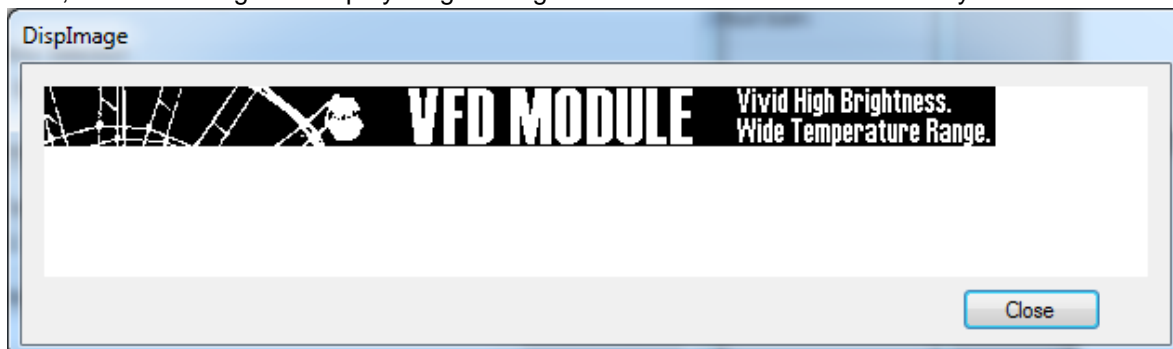
- Action: User can enable or disable the scroll mode for the program as well as enable or disable the scroll mode type individually. Horizontal scroll the text from the right to left.



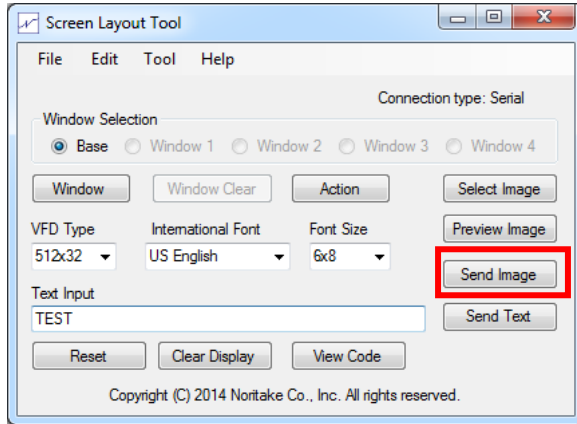
5. Image: a user can load image file on to the VFD by clicking *Select Image* button to open image load dialog below. Select an image file to load to the VFD and click open.



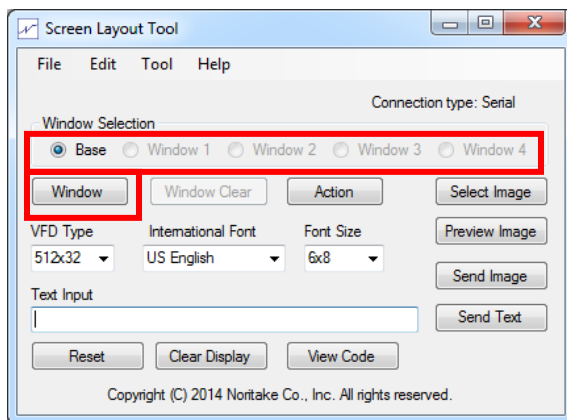
Next, show the image on DisplayImage dialog. Click close or click Load to see byte codes.



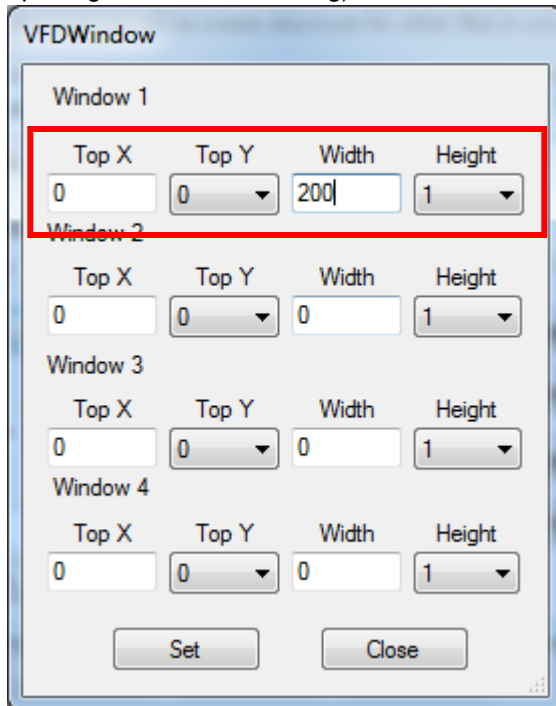
After closing DisplayImage Dialog, click *Send Image* button to load image to VFD.



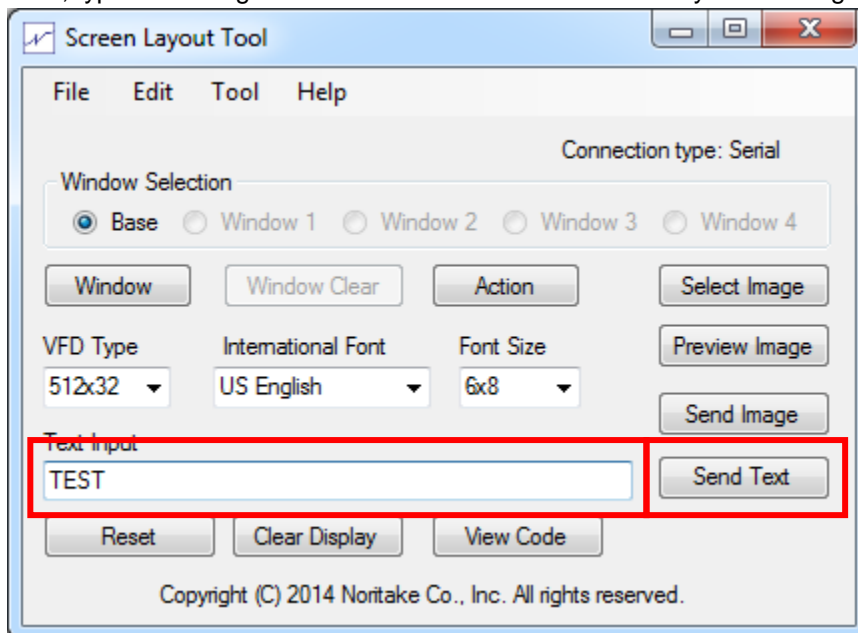
6. Windows: a user can divide maximum 4 different windows. Window setting is one window at a time. At first, select the window number radio button and click *Window* button.



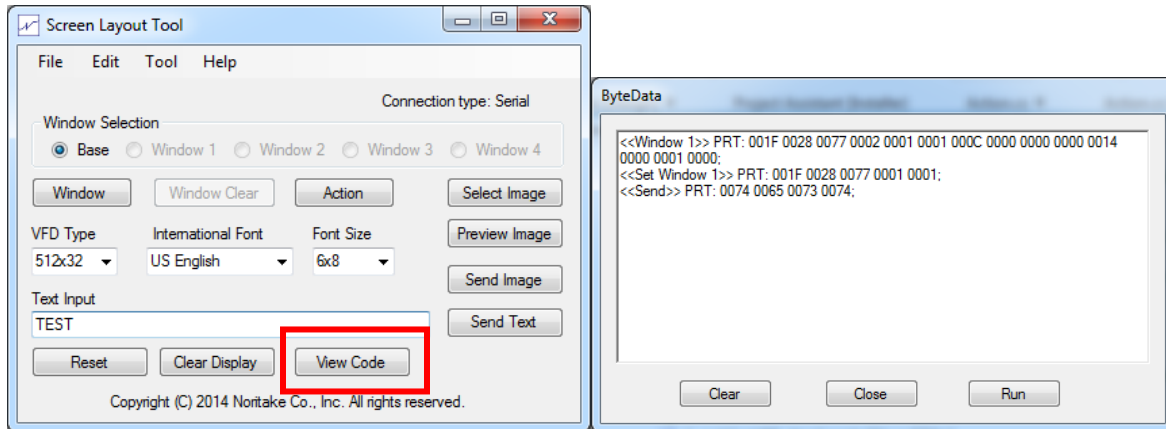
Window button opens VFDWindow setting dialog. A user must set the Window's X position, Y position, window's width, and height. At last, check the Windows # Enable check box (this checkbox automatically checked after opening the windows setting).



- Next, type a message and click *Send Text* button to show your message in the window.



8. Code. All the codes related to the operation will be stored in Code. User is able to view code in order to see what the operations he/she has done.



User can clear the text box, but that won't clear the code. That means next time user clicks the view code, user will still be able to see these code. User can run the code by clicking the run, which will have the same result as user just operated in the panel.